



2 - 6 GIRAWAH PLACE, MATRAVILLE

LANDSCAPE ARCHITECTURAL DEVELOPMENT APPLICATION

Issue: B

Date: 14.09.2022

FOR:
Spirecorp

Sturt Noble
Associates

Architectural site plan for the Bunnerong Creek development. The plan shows a building complex with various outdoor spaces and landscaping. Key features include:

- Botany Road Frontage** (PLAN REFER TO DA-2207-04) along the bottom left.
- Girawah Place** along the top.
- Bunnerong Creek** to the right.
- Open Space Reserve** at the bottom.
- Numbered areas** (1-11) indicating specific zones.
- Landscaping elements** like trees, grass, and paths.
- Section lines** A-A, B-B, C-C, D-D, and E-E.
- Specific plan references**: Sun Terrace Plan (REFER TO DA-2207-02), Plaza Plan (REFER TO DA-2207-03), and Ground Floor Plan (REFER TO DA-2207-05).

1. Existing riparian corridor to be retained and protected
2. Sun terrace with views over the riparian corridor
3. Stairs to riparian corridor with enlarged seating steps and stormwater feature channel
4. Central plaza suitable for large gatherings and markets
5. Small gathering space
6. Stairs to Girawah Place
7. Ramp to street
8. Driveways
9. Existing trees to be retained and protected
10. Beer garden
11. Frontage to Botany Road and site signage

DEVELOPMENT APPLICATION
483/2022
Randwick City Council
4 October 2022
Records Received

Site boundary

Proposed trees. Refer to detailed plans for species

Existing trees to be retained and protected. Tree numbers correlate with Arborist Impact Assessment carried out by Sturt Noble Arboriculture on the 27.02.2020

Landscape section. Refer to DA-2207-06

Sturt Noble
Associates

Suite 91, L5, 330 Wattle St
Ultimo NSW 2007
T. 02 9211 3744
W. www.sturt-noble.com.au
landscape architecture
environmental & urban design

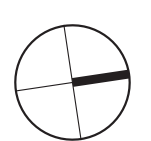
PROJECT
2 - 6 GIRAWAH PLACE, MATRAVILLE

CLIENT
Spirecorp

DRAWING

OVERALL LANDSCAPE PLAN

DRAWING No.	ISSUE	DRAWN	DATE
DA-2207-01	B	jc	14.09.2022



0 2 10m
Scale 1:200@B1

ACN: 164 245 514 ABN: 99 164 245 514
THIS DRAWING SHOULD BE READ IN CONJUNCTION WITH ALL RELEVANT
CONTRACTS, SPECIFICATIONS, REPORTS AND DRAWINGS. COPYRIGHT
OF THIS DRAWINGS IS VESTED IN STURT NOBLE ASSOCIATES PTY LTD.

SUN TERRACE PLAN



NOTES

1. Sun terrace with seating area and views over the Bunnerong Creek Riparian Corridor below
2. Balustrade height planter with trailing plants to create a green curtain
3. Stairs to riparian corridor with seating steps provide informal seating opportunities in the sun or shade facing the Riparian Corridor
4. Stone swale cascades alongside the stairs creating an ephemeral water feature during rain events
5. Green walls created with growing wires with flowering vines attached to building façade
6. Raised planters with layered planting and suitable soil to accommodate vines for the green walls
7. Rolled pipe structures with flowering vines and lighting create sculptural feature archways at all times of the day and have seasonal change
8. Stone swales with gravel, feature boulders and localised planting collect pavement run off during rain events
9. Planter beds with layered planting. Soil to be graded between walls to achieve planting soil depths
10. Seating height planter walls
11. 500mm wide seating wall
12. Two tone paving

DEVELOPMENT APPLICATION
483/2022
Randwick City Council
4 October 2022
Records Received

LEGEND

- Site boundary
- Mounding to planting beds
- +98.000 Proposed levels
EX = Existing level
TOW = Top of wall

INDICATIVE PRECEDENT IMAGES



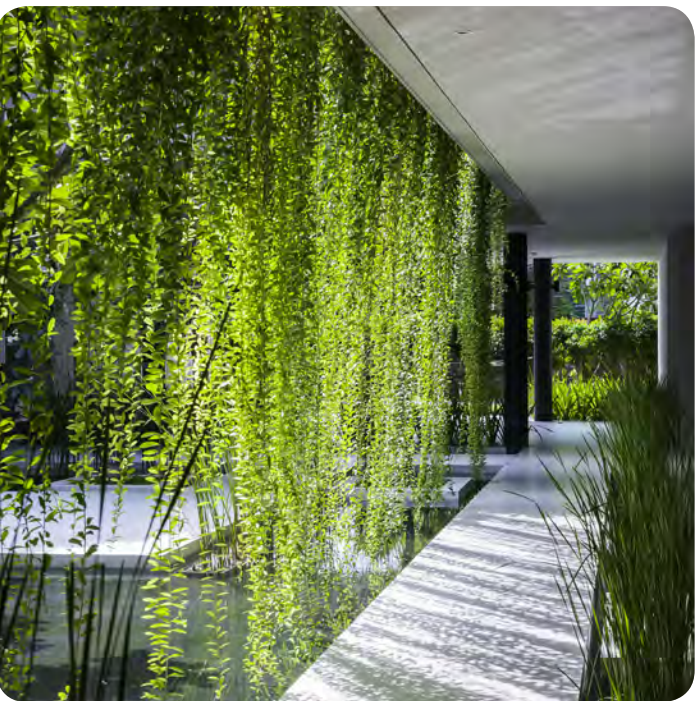
Graded planting areas



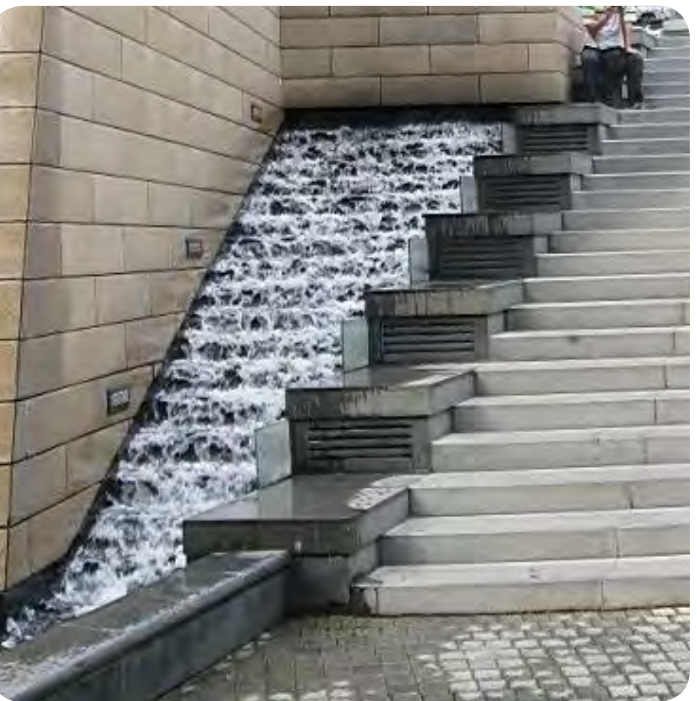
Cantilevered sun terrace



Sun terrace seating area



Cascading planting to level below



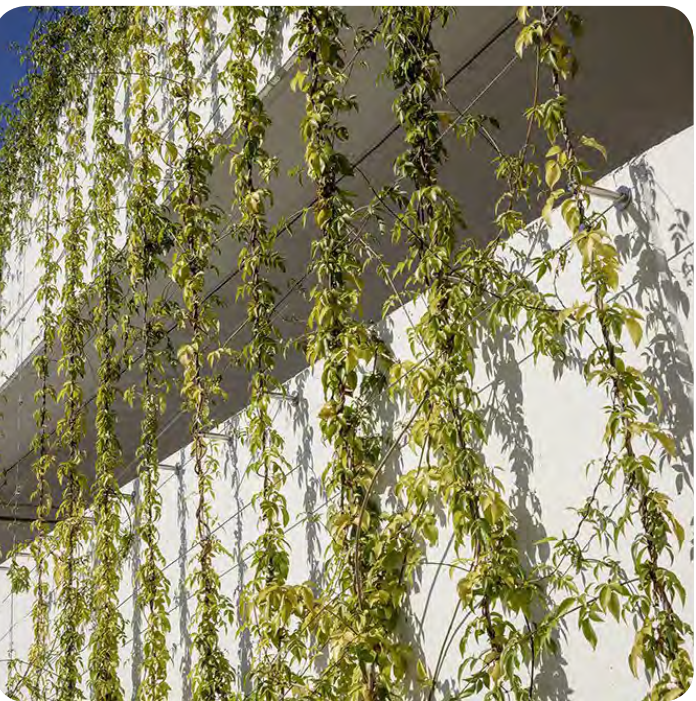
Stone swale alongside stairs



Stone swale



Feature archways



Green wall growing wires and vines

Sturt Noble
Associates
Suite 91, L5, 330 Wattle St
Ultimo NSW 2007
T. 02 9211 3744
W. www.sturnoble.com.au
landscape architecture
environmental & urban design

PROJECT
2 - 6 GIRAWAH PLACE, MATRAVILLE

CLIENT
Spirecorp

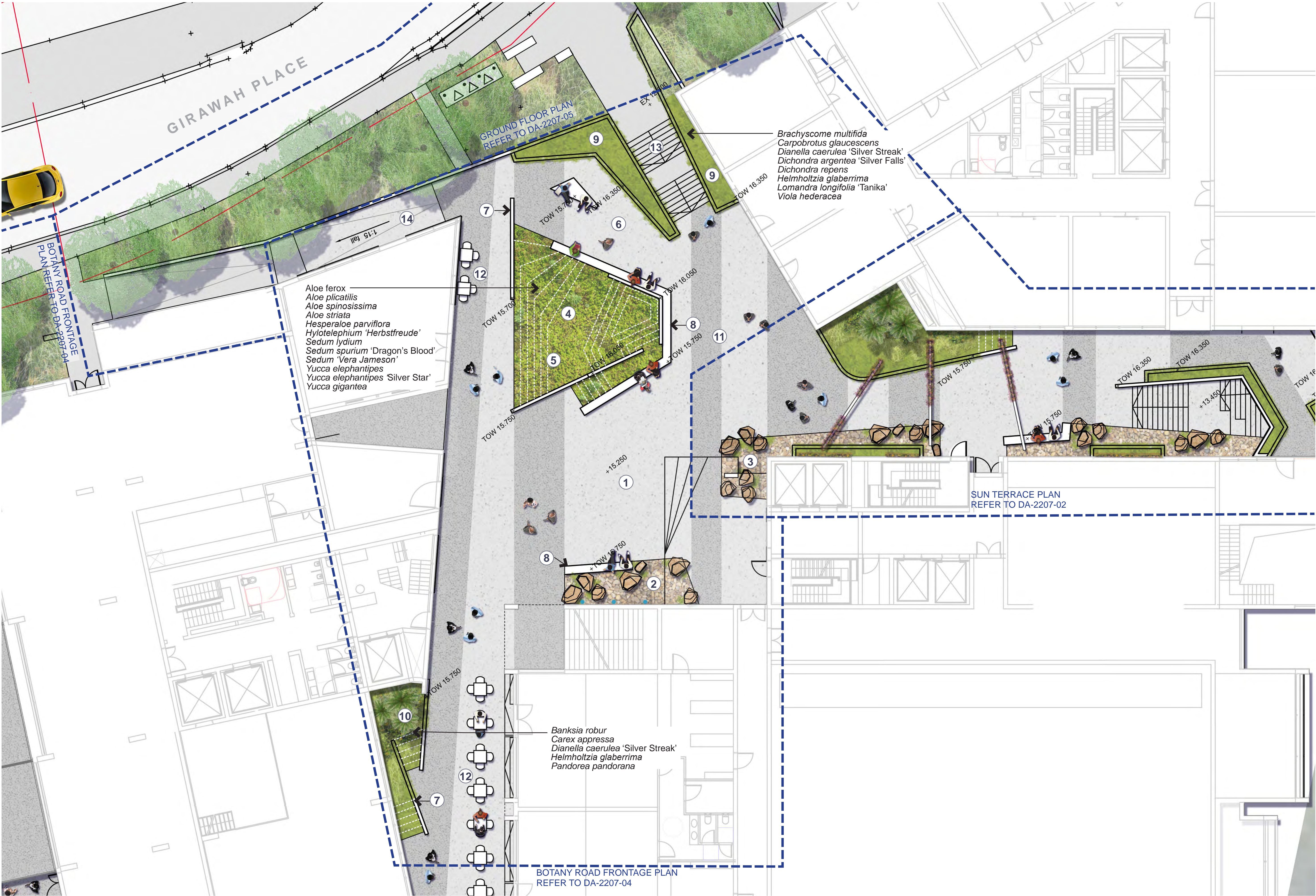
DRAWING
SUN TERRACE PLAN

DRAWING No. DA-2207-02 ISSUE B DRAWN jc DATE 14.09.2022

Scale 1:100@B1

ACN: 164 245 514 ABN: 99 164 245 514
THIS DRAWING SHOULD BE READ IN CONJUNCTION WITH ALL RELEVANT
CONTRACTS, SPECIFICATIONS, REPORTS AND DRAWINGS. COPYRIGHT
OF THIS DRAWINGS IS VESTED IN STURT NOBLE ASSOCIATES PTY LTD.

PLAZA PLAN



NOTES

- 1. Central plaza suitable for large gatherings and markets
- 2. Sculptural stone swale with localised feature planting. Roof stormwater directed to cascade down to stone swale as an ephemeral water feature during rain events
- 3. Stone swales with gravel, feature boulders and localised planting collect pavement run off during rain events
- 4. Sculpture
- 5. Succulent planting to create architectural, coloured and textured base around sculpture
- 6. Small gathering space with a variety of seating options creates a more intimate space for resting and relaxing
- 7. Seating height planter walls
- 8. 500mm wide seating wall
- 9. Balustrade height planter with trailing plants to create a green curtain
- 10. Planter beds with layered planting. Soil to be graded between walls to achieve planting soil depths
- 11. Two tone paving
- 12. Outdoor dining
- 13. Stairs to Girawah Place
- 14. Ramp to street

DEVELOPMENT APPLICATION
483/2022
Randwick City Council
4 October 2022
Records Received

LEGEND

- Site boundary
- Mounding to planting beds
- +98.000 Proposed levels
EX = Existing level
TOW = Top of wall

INDICATIVE PRECEDENT IMAGES



Graded planting island



Stone swale



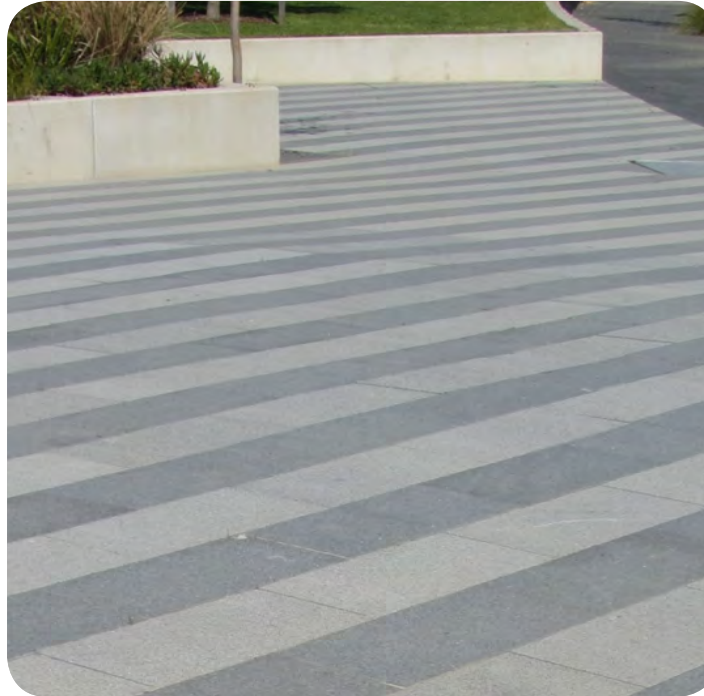
Pipes to direct roof rainwater into swale



Seating walls



Seating walls



Two tone paving plaza



Succulent planting



Balustrade height raised planters

Sturt Noble
Associates

Suite 91, L5, 330 Wattle St
Ultimo NSW 2007
T. 02 9211 3744
W. www.sturnoble.com.au
landscape architecture
environmental & urban design

PROJECT
2 - 6 GIRAWAH PLACE, MATRIVILLE

CLIENT
Spirecorp

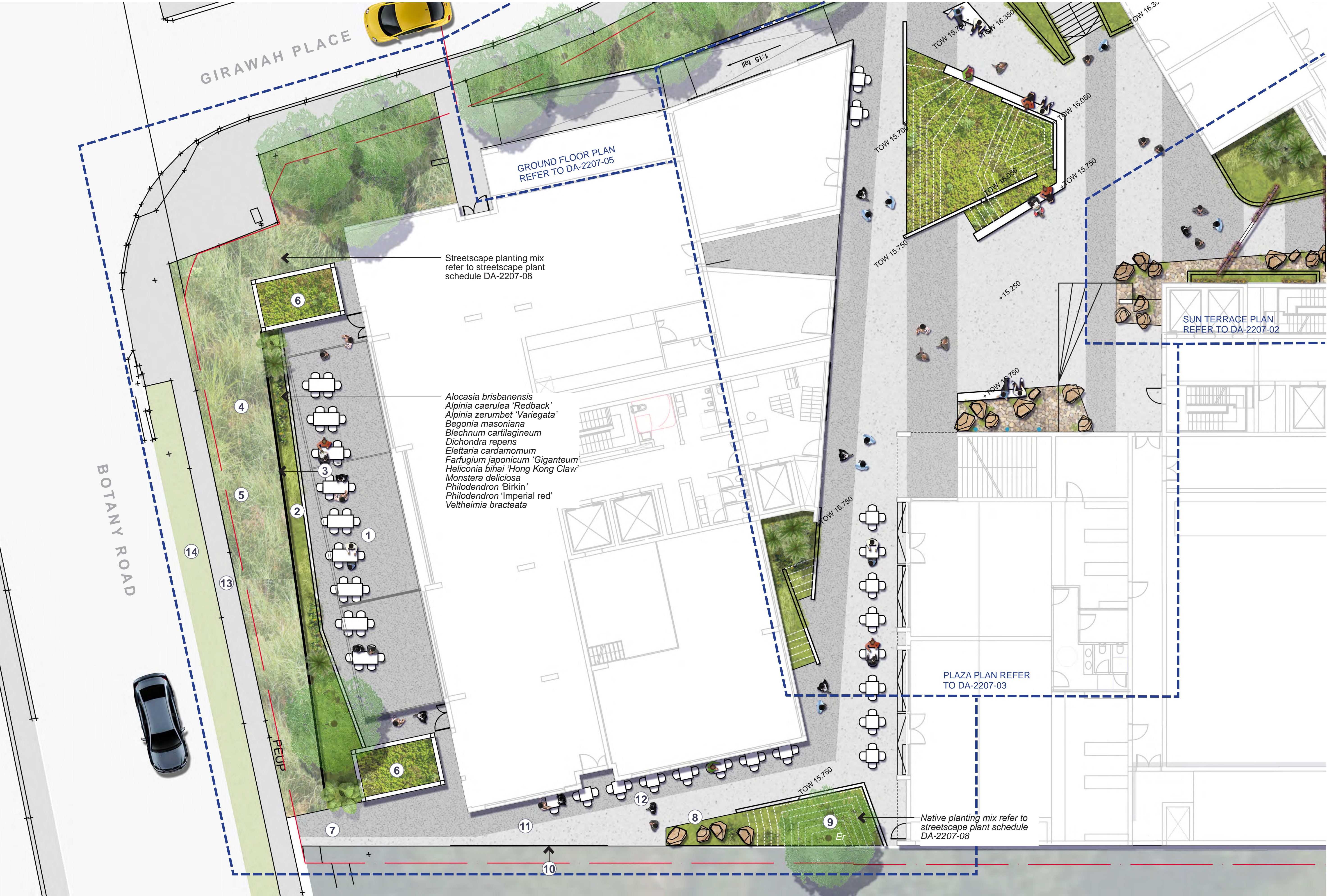
DRAWING
PLAZA PLAN

DRAWING No. DA-2207-03 ISSUE B DRAWN jc DATE 14.09.2022

Scale 1:100@B1

ACN: 164 245 514 ABN: 99 164 245 514
THIS DRAWING SHOULD BE READ IN CONJUNCTION WITH ALL RELEVANT CONTRACTS, SPECIFICATIONS, REPORTS AND DRAWINGS. COPYRIGHT OF THIS DRAWINGS IS VESTED IN STURT NOBLE ASSOCIATES PTY LTD.

BOTANY ROAD FRONTAGE PLAN



NOTES

1. Paved beer garden with retractable awning
2. Raised planter with lush layered planting
3. Perforated metal screen creates a feature edge, a backdrop to the site signage and screens Botany Road from the beer garden
4. Site signage
5. Low native planting creates a low maintenance setting for the site signage
6. Green roofs with trailing plants located above fire stairs
7. Footpath connection to Botany Road
8. Stone swale with gravel, feature boulders and localised planting collect pavement run off during rain events
9. Planter beds with layered planting. Soil to be graded between walls to achieve planting soil depths
10. Balustrade along pavement edge provides views into adjacent reserve
11. Two tone paving
12. Outdoor dining
13. Existing footpath
14. Existing verge

DEVELOPMENT APPLICATION
483/2022
Randwick City Council
4 October 2022
Records Received

LEGEND

- Site boundary
- Mounding to planting beds
- +98.000 Proposed levels
EX = Existing level
TOW = Top of wall
- Proposed trees. Refer Plaza Plant Schedule on DA-2207-07 for species

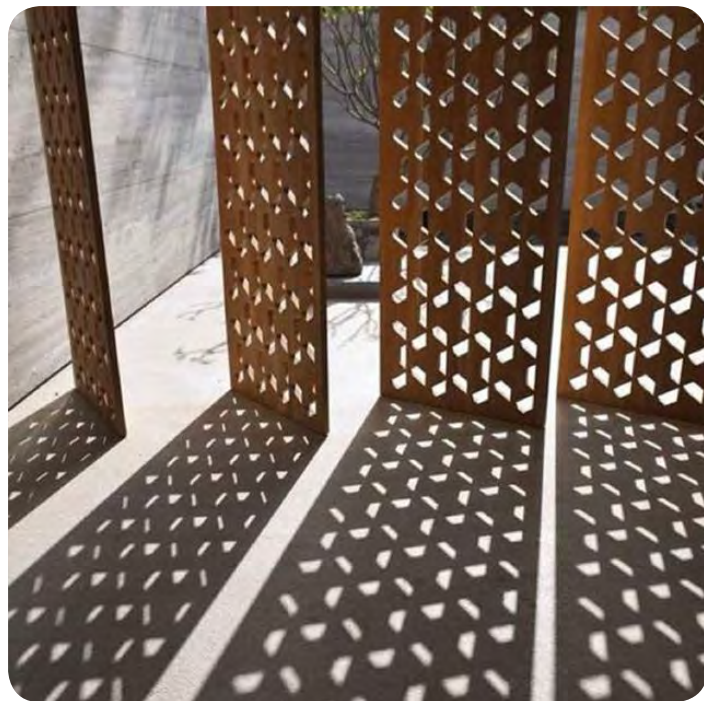
INDICATIVE PRECEDENT IMAGES



Lush layered planting



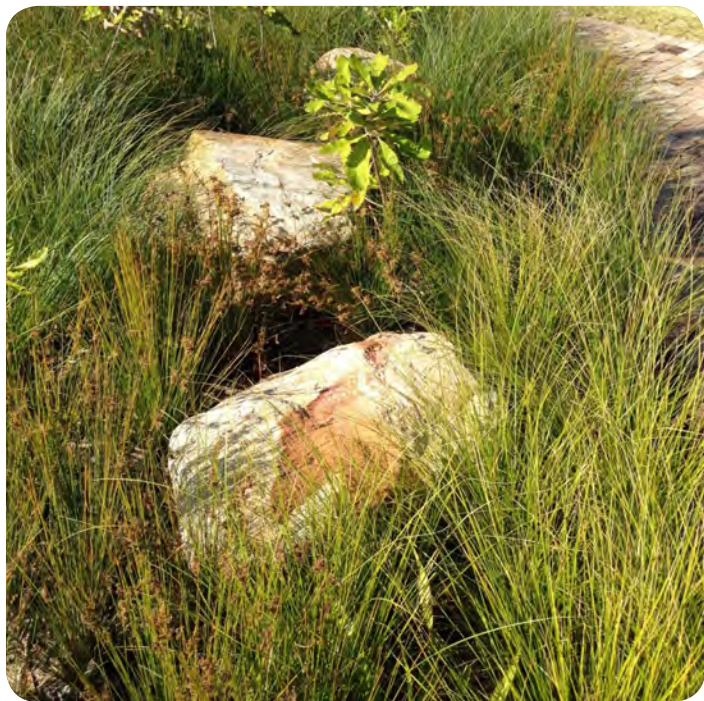
Feature screen



Feature screen



Green roof



Boulders in planting areas

Sturt Noble
Associates
Suite 91, L5, 330 Wattle St
Ultimo NSW 2007
T. 02 9211 3744
W. www.sturnoble.com.au
landscape architecture
environmental & urban design

PROJECT
2 - 6 GIRAWAH PLACE, MATRAVILLE

CLIENT
Spirecorp

DRAWING
BOTANY ROAD FRONTAGE PLAN

DRAWING No. ISSUE DRAWN DATE
DA-2207-04 B jc 14.09.2022

Scale 1:100@B1

ACN: 164 245 514 ABN: 99 164 245 514
THIS DRAWING SHOULD BE READ IN CONJUNCTION WITH ALL RELEVANT CONTRACTS, SPECIFICATIONS, REPORTS AND DRAWINGS. COPYRIGHT OF THIS DRAWING IS VESTED IN STURT NOBLE ASSOCIATES PTY LTD.

STREETSCAPE AND DEVELOPMENT EDGE PLAN



NOTES

1. Stairs to riparian corridor with seating steps provide informal seating opportunities in the sun or shade facing the Riparian Corridor
2. Stone swale cascades alongside the stairs creating an ephemeral water feature during rain events
3. Under croft walkway with sandstone seating blocks that provide a seating edge alongside the Riparian Corridor
4. Two tone paving paths provide pedestrian access to the building entries and retail units
5. Sandstone block seats to provide informal seating areas and places to wait and gather near entries
6. Low planting with trees to create low maintenance green frontage to building. Species chosen to ensure clear sightlines between the building and street frontage are maintained
7. Tree planting to green the building facade and filter western sun
8. Driveway
9. Balustrade height planter with trailing plants to create a green curtain
10. Site signage
11. Stairs to plaza
12. Fire egress path
13. Stairs to building
14. Ramp access to plaza
15. Existing footpath

LEGEND

- Site boundary
- +98.000 Proposed levels
EX = Existing level
TOW = Top of wall
- Existing trees to be retained and protected
- Proposed trees. Refer Streetscape Plant Schedule on DA-2207-08 for species

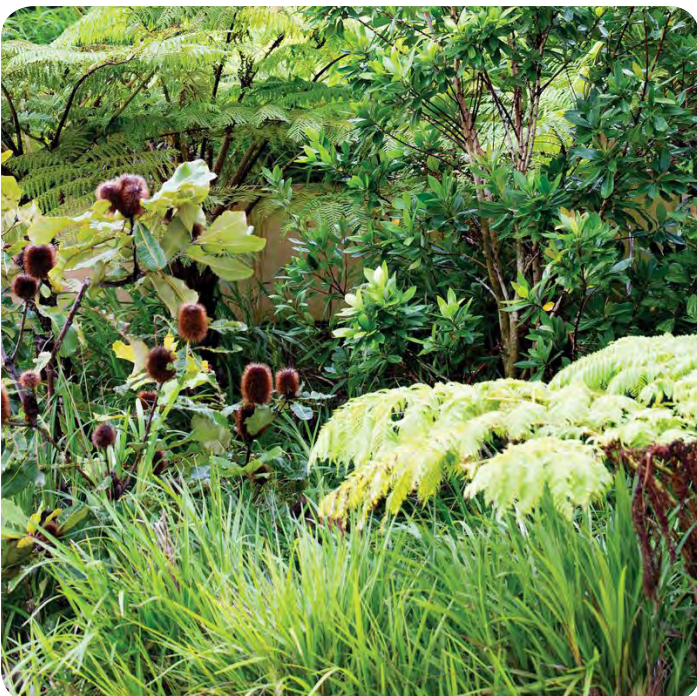
INDICATIVE PRECEDENT IMAGES



Stairs with large seating steps



Low planting and tree planting



Native feature planting



Informal seating areas



Sandstone block seats

Sturt Noble
Associates

Suite 91, L5, 330 Wattle St
Ultimo NSW 2007
T. 02 9211 3744
W. www.sturt-noble.com.au
landscape architecture
environmental & urban design

PROJECT
2 - 6 GIRAWAH PLACE, MATRAVILLE

CLIENT
Spirecorp

DRAWING
STREETSCAPE AND DEVELOPMENT
EDGE PLAN

DRAWING No. ISSUE DRAWN DATE
DA-2207-05 B jc 14.09.2022

Scale 1:200@B1

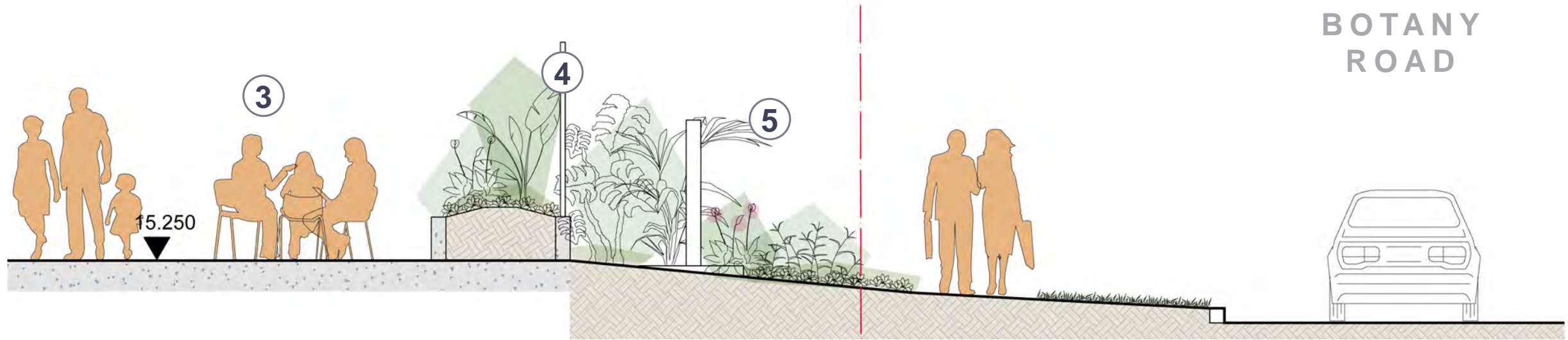
ACN: 164 245 514
ABN: 99 164 245 514
THIS DRAWING SHOULD BE READ IN CONJUNCTION WITH ALL RELEVANT
CONTRACTS, SPECIFICATIONS, REPORTS AND DRAWINGS. COPYRIGHT
OF THIS DRAWING IS VESTED IN STURT NOBLE ASSOCIATES PTY LTD.

DEVELOPMENT APPLICATION
483/2022
Randwick City Council
4 October 2022
Records Received

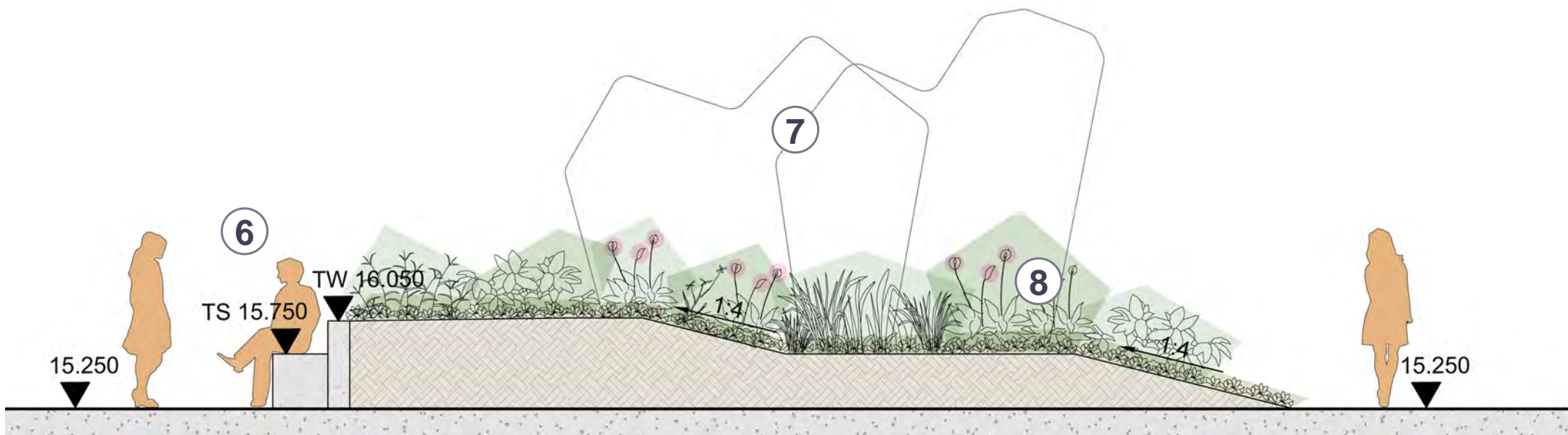
LANDSCAPE SECTIONS



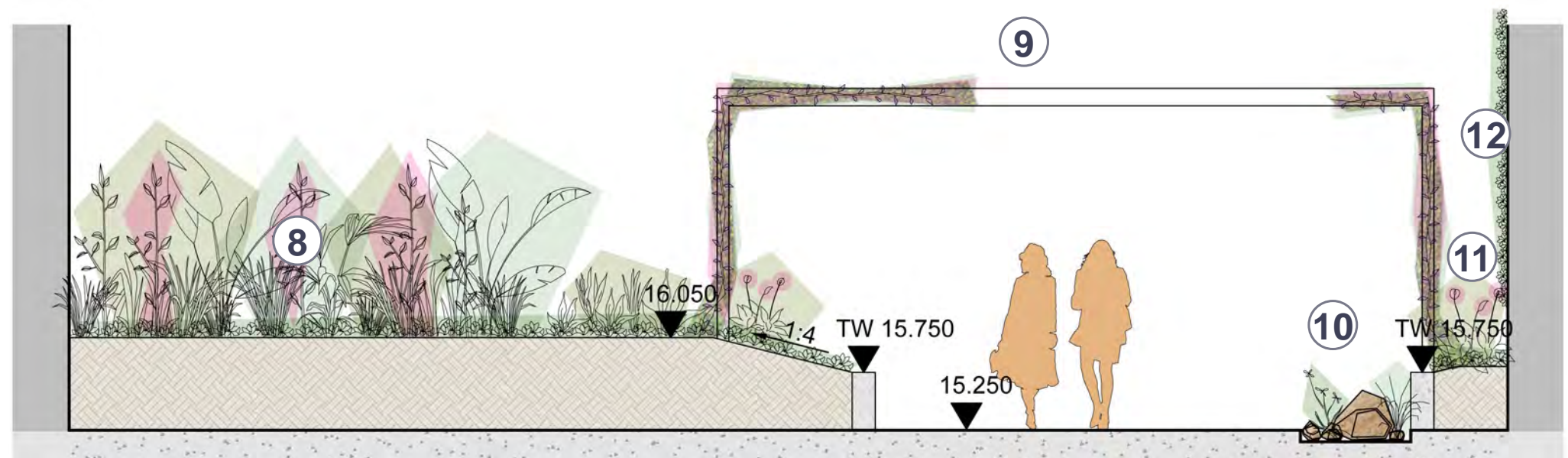
SECTION A - A Girawah Place streetscape section



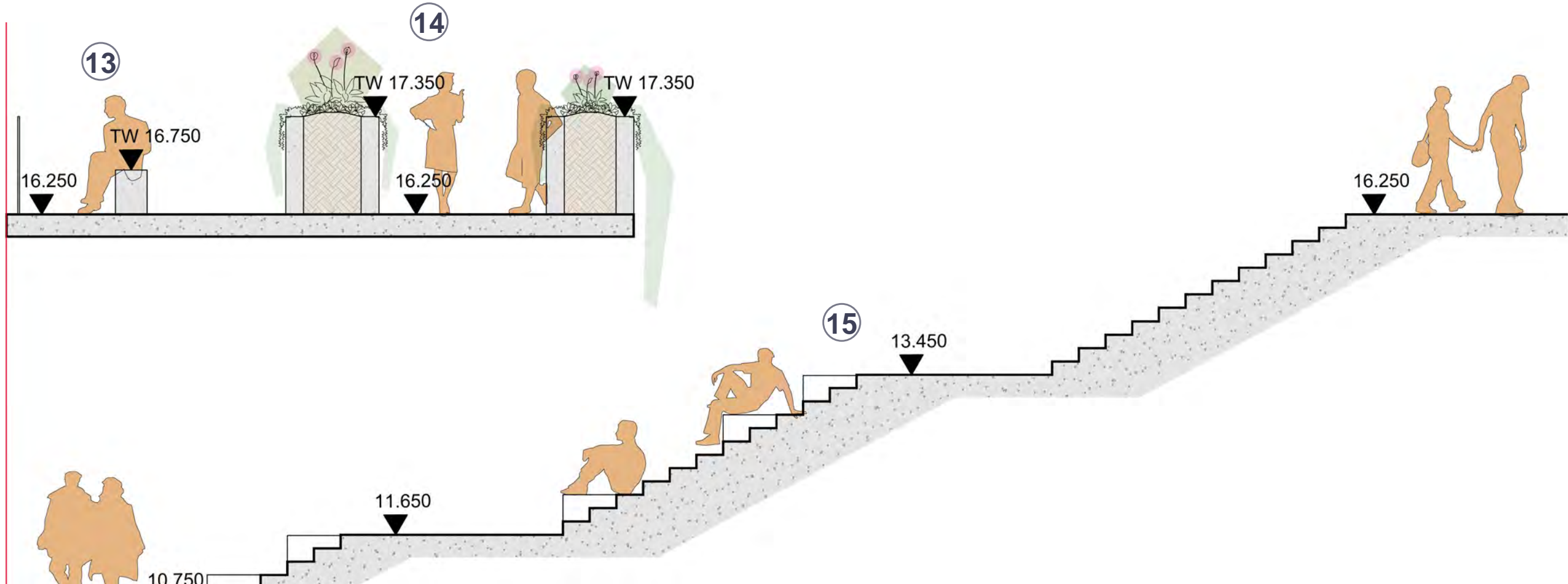
SECTION B - B Botany Road and beer garden section



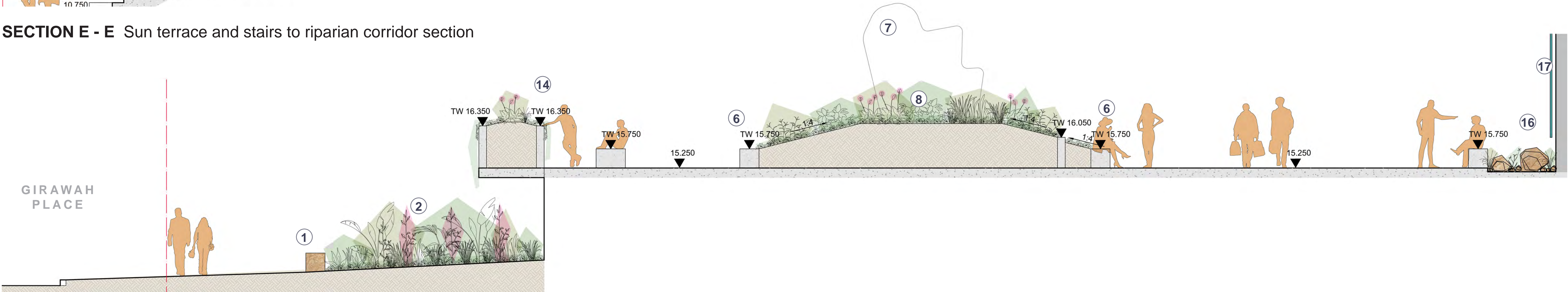
SECTION C - C Central graded planter with sculpture section



SECTION D - D Feature archway and green wall section



SECTION E - E Sun terrace and stairs to riparian corridor section



SECTION F - F Girawah Place streetscape to central plaza section

NOTES

1. Sandstone block seats to provide informal seating areas and places to wait near property entries
2. Low planting with trees to create low maintenance green frontage to building. Species chosen to ensure clear sightlines between the building and street frontage are maintained
3. Beer garden
4. Layered planting and feature screen
5. Low planting around site signage
6. Seating wall to planter edge
7. Sculpture
8. Graded planting bed
9. Feature archways with flowering vines and lighting
10. Stone swale
11. Raised planter with flowering vines
12. Green wall
13. Sun terrace with seating area
14. 1.1m high non climbable planter wall with cascading planting
15. Stairs to riparian corridor with enlarged seating steps
16. Sculptural stone swale with localised feature planting
17. Roof stormwater directed to cascade down to plaza as an ephemeral water feature during rain events

Section line locations refer to DA-2207-01

DEVELOPMENT APPLICATION
483/2022
Randwick City Council
4 October 2022
Records Received

Sturt Noble
Associates
Suite 91, L5, 330 Wattle St
Ultimo NSW 2007
T. 02 9211 3744
W. www.sturnoble.com.au
landscape architecture
environmental & urban design

PROJECT
2 - 6 GIRAWAH PLACE, MATRAVILLE

CLIENT
Spirecorp

DRAWING
LANDSCAPE SECTIONS

DRAWING No.	ISSUE	DRAWN	DATE
DA-2207-06	A	jc	20.06.2022

0 0.5 1 1.5 2.4m
Scale 1:50@B1

ACN: 164 245 514 ABN: 99 164 245 514
THIS DRAWING SHOULD BE READ IN CONJUNCTION WITH ALL RELEVANT
CONTRACTS, SPECIFICATIONS, REPORTS AND DRAWINGS. COPYRIGHT
OF THIS DRAWINGS IS VESTED IN STURT NOBLE ASSOCIATES PTY LTD.

PLAZA AND BEER GARDEN INDICATIVE PLANTING

CODE	BOTANICAL NAME	COMMON NAME	POT SIZE	SPACE
TREES				
Er	<i>Elaeocarpus reticulatus</i>	Blueberry Ash	100L	A.S.
SHRUBS & GROUNDCOVERS				
	<i>Aloe ferox</i>	Cape aloe	5L	0.4m
	<i>Aloe spinosissima</i>	Spider Aloe	5L	0.6m
	<i>Aloe striata</i>	Coral Aloe	5L	0.4m
	<i>Aloe plicatilis</i>	Fan Aloe	5L	0.5m
	<i>Alpinia caerulea</i> 'Redback'	Red Back Ginger	25L	0.6m
	<i>Alpinia zerumbet</i>	Ginger	25L	0.6m
	<i>Alpinia zerumbet</i> 'Variegata'	Verigated Shell Ginger	5L	0.8m
	<i>Alocasia brisbanensis</i>	Native Lily	25L	1m
	<i>Aphanopetalum resinosum</i>	Gum Vine	5L	0.6m
	<i>Banksia robur</i>	Swamp Banksia	25L	0.8m
	<i>Begonia masoniana</i>	Iron Cross Begonia	150mm	0.3m
	<i>Blechnum cartilagineum</i>	Gristle Fern	150mm	0.6m
	<i>Brachyscome multifida</i>	Native Daisy	150mm	0.3m
	<i>Casuarina glauca</i> 'Cousin It'	Cousin It Sheoak	5L	0.5m
	<i>Carex appressa</i>	Tall Sedge	150mm	0.5m
	<i>Carpobrotus glaucescens</i>	Pig Face	150mm	0.5m
	<i>Clematis glycinoides</i>	Headache vine	5L	1m
	<i>Correa glabra</i>	Rock Correa	150mm	0.4m
	<i>Cyathea cooperi</i>	Australian Tree Fern	45L	A.S.
	<i>Daviesia ulicifolia</i>	Gorse bitter-pea	5L	0.7m
	<i>Dianella caerulea</i> 'Silver Streak'	Silver Streak Flax Lily	150mm	0.4m
	<i>Dichondra argentea</i> 'Silver Falls'	Silver Falls	150mm	0.4m
	<i>Dichondra repens</i>	Kidney Weed	150mm	0.25m
	<i>Dicksonia antarctica</i>	Soft Tree Fern	45L	A.S.
	<i>Elettaria cardamomum</i>	Green Cardamom	5L	1m
	<i>Erigeron karvinskianus</i>	Seaside Daisy	150mm	0.5m
	<i>Farfugium japonicum</i> 'Giganteum'	Giant Leopard Plant	150mm	0.3m
	<i>Glycine clandestina</i>	Twining Glycine	150mm	0.5m
	<i>Goodenia ovata</i>	Hop goodenia	25L	A.S.
	<i>Grevillea</i> 'Robyn Gordon'	Grevillea	5L	1m
	<i>Heliconia bihai</i> 'Hong Kong Claw'	Hong Kong Claw Heliconia	25L	1m
	<i>Helmholtzia glaberrima</i>	Stream Lily	25L	0.8m
	<i>Hesperaloe parviflora</i>	Red Yucca	5L	0.6m
	<i>Hibbertia scandens</i>	Guinea Flower	5L	0.5m
	<i>Hylotelephium</i> 'Herbstfreude'	Autumn Joy sedum	150mm	0.4m
	<i>Kniphofia</i> 'Royal Standard'	Red Hot Poker	5L	0.5m
	<i>Libertia paniculata</i>	Grass Flag	150mm	0.2m
	<i>Lomandra longifolia</i> 'Tanika'	Lomandra Tanika	150mm	0.3m
	<i>Monstera deliciosa</i>	Fruit Salad Plant	25L	0.8m
	<i>Myoporum parvifolium</i>	Creeping Boobialla	150mm	0.5m
	<i>Pandorea jasminoides</i>	Bower plant	5L	A.S.
	<i>Pandorea pandorana</i>	Wonga-wonga Vine	5L	A.S.
	<i>Pelargonium australe</i>	Native Storksbill	150mm	0.5m
	<i>Philodendron</i> 'Birkin'	Philodendron Birkin	150mm	0.5m
	<i>Philodendron</i> 'Imperial red'	Philodendron Imperial Red	150mm	0.5m
	<i>Russelia equisetiformis</i>	Firecracker Plant	5L	1m
	<i>Sedum lydium</i>	Mossy Stonecrop	150mm	0.25m
	<i>Sedum spurium</i> 'Dragon's Blood'	Dragon's Blood Sedum	150mm	0.25m
	<i>Sedum</i> 'Vera Jameson'	Sedum 'Vera Jameson'	150mm	0.25m
	<i>Tulbaghia violacea</i>	Society garlic	150mm	0.2m
	<i>Veltheimia bracteata</i>	Forest Lily	150mm	0.5m
	<i>Viola hederacea</i>	Native Violet	150mm	0.25m
	<i>Westringia longifolia</i>	Long-leaved longifolia	5L	0.7m
	<i>Yucca elephantipes</i>	Giant Yucca	25L	A.S.
	<i>Yucca elephantipes</i> 'Silver Star'	Silver Star Yucca	25L	A.S.
	<i>Yucca gigantea</i>	Spineless Yucca	25L	0.7m



Aloe spinosissima



Aloe striata



Alpinia caerulea 'Redback'



Alpinia zerumbet 'Variegata'



Alpinia zerumbet



Banksia robur



Begonia masoniana



Blechnum cartilagineum



Dichondra argentea 'Silver Falls'



Dichondra repens



Farfugium japonicum 'Giganteum'



Monstera deliciosa



Pandorea jasminoides



Pandorea pandorana



Tulbaghia violacea



Yucca gigantea

DEVELOPMENT APPLICATION
483/2022
Randwick City Council
4 October 2022
Records Received



Suite 91, L5, 330 Wattle St
Ultimo NSW 2007
T. 02 9211 3744
W. www.sturt-noble.com.au
landscape architecture
environmental & urban design

PROJECT
2 - 6 GIRAWAH PLACE, MATRAVILLE

CLIENT
Spirecorp

DRAWING
PLAZA AND BEER GARDEN INDICATIVE PLANTING

DRAWING No.	ISSUE	DRAWN	DATE
DA-2207-07	A	jc	20.06.2022

STREETSCAPE INDICATIVE PLANTING

CODE	BOTANICAL NAME	COMMON NAME	POT SIZE	SPACE
TREES				
Ac	<i>Angophora costata</i>	Sydney Red Gum	100L	A.S.
Be	<i>Banksia ericifolia</i>	Heath Leaved Banksia	100L	A.S.
Bs	<i>Banksia serrata</i>	Old Man Banksia	100L	A.S.
Er	<i>Elaeocarpus reticulatus</i>	Blueberry Ash	100L	A.S.
Sl	<i>Syzygium leuhmanii</i>	Riberry	100L	A.S.
Tl	<i>Tristaniopsis laurina</i>	Water Gum	100L	A.S.
SHRUBS & GROUNDCOVERS				
	<i>Acacia longifolia</i>	Coastal Wattle	25L	2m
	<i>Actinotus helianthi</i>	Flannel Flower	150mm	0.4m
	<i>Alocasia brisbanensis</i>	Native Lily	25L	1m
	<i>Alpinia caerulea</i> ‘Redback’	Red Back Ginger	25L	0.6m
	<i>Alpinia zerumbet</i> ‘Variegata’	Verigated Shell Ginger	5L	0.8m
	<i>Aphanopetalum resinosum</i>	Gum Vine	5L	0.6m
	<i>Astroloma pinifolium</i>	Pine Heath	150mm	1
	<i>Bauera rubioides</i>	Dog Rose	5L	0.5m
	<i>Begonia masoniana</i>	Iron Cross Begonia	150mm	0.3m
	<i>Billardiera scandens</i>	Apple Berry	5L	A.S.
	<i>Blechnum cartilagineum</i>	Gristle Fern	150mm	0.6m
	<i>Brachyscome multifida</i>	Native Daisy	150mm	0.3m
	<i>Carpobrotus glaucescens</i>	Pig Face	150mm	0.5m
	<i>Clematis glycinoides</i>	Headache vine	5L	1m
	<i>Correa glabra</i>	Rock Correa	150mm	0.4m
	<i>Cyathea cooperi</i>	Australian Tree Fern	45L	A.S.
	<i>Darwinia fascicularis</i>	Clustered Scent Myrtle	150mm	0.8m
	<i>Daviesia ulicifolia</i>	Gorse bitter-pea	5L	0.7m
	<i>Dianella caerulea</i> ‘Silver Streak’	Silver Streak Flax Lily	150mm	0.4m
	<i>Dianella revoluta</i>	Black Anther Flax Lily	150mm	0.3m
	<i>Dichelachne crinita</i>	Linghair Plumegrass	150mm	0.25
	<i>Dichondra argentea</i> ‘Silver Falls’	Silver Falls	150mm	0.4m
	<i>Dichondra repens</i>	Kidney Weed	150mm	0.25m
	<i>Dicksonia antarctica</i>	Soft Tree Fern	45L	A.S.
	<i>Dillwynia retorta</i>	Eggs and Bacon	5L	1.5m
	<i>Doryanthes excelsa</i>	GyMEA Lily	45L	1m
	<i>Elettaria cardamomum</i>	Green Cardamom	5L	1m
	<i>Farfugium japonicum</i> ‘Giganteum’	Giant Leopard Plant	150mm	0.3m
	<i>Glycine clandestina</i>	Twining Glycine	150mm	0.5m
	<i>Goodenia ovata</i>	Hop goodenia	25L	A.S.
	<i>Grevillea</i> ‘Robyn Gordon’	Grevillea	5L	1m
	<i>Hakea teretifolia</i>	Dagger Hakea	5L	0.8m
	<i>Hardenbergia violacea</i>	Purple Coral Pea	5L	0.8m
	<i>Heliconia bihai</i> ‘Hong Kong Claw’	Hong Kong Claw Heliconia	25L	1m
	<i>Helmholtzia glaberrima</i>	Stream Lily	25L	0.8m
	<i>Hibbertia fasciculata</i>	Guinea flower	5L	0.5
	<i>Hibbertia scandens</i>	Guinea flower	5L	0.5m
	<i>Kunzea ambigua</i>	Tick Bush	5L	0.9m
	<i>Leptospermum laevigatum</i>	Coastal Tea Tree	25L	A.S.
	<i>Libertia paniculata</i>	Grass Flag	150mm	0.2m
	<i>Lomandra longifolia</i>	Spiny-Headed Mat Rush	5L	0.6m
	<i>Lomandra longifolia</i> ‘Tanika’	Lomandra Tanika	150mm	0.3m
	<i>Melaleuca squamea</i>	Swamp Honey Myrtle	5L	1m
	<i>Monstera deliciosa</i>	Fruit Salad Plant	25L	0.8m
	<i>Myoporum parvifolium</i>	Creeping Boobialla	150mm	0.5m
	<i>Pelargonium australe</i>	Native Storksbill	150mm	0.5m
	<i>Philodendron</i> ‘Birkin’	Philodendron Birkin	150mm	0.5m
	<i>Philodendron</i> ‘Imperial red’	Philodendron Imperial Red	150mm	0.5m
	<i>Veltheimia bracteata</i>	Forest Lily	150mm	0.5m
	<i>Viola hederacea</i>	Native Violet	150mm	0.25m
	<i>Xanthorrhoea resinifera</i>	Grass Tree	25L	A.S.



Acacia longifolia



Actinotus helianthi



Angophora costata



Banksia ericifolia



Banksia serrata



Bauera rubioides



Darwinia fascicularis



Dianella revoluta



Doryanthes excelsa



Elaeocarpus reticulatus



Hakea teretifolia



Leptospermum laevigatum



Melaleuca squamea



Syzygium luehmanii



Tristaniopsis laurina



Xanthorrhoea resinifera





Suite 91, L5, 330 Wattle St
Ultimo NSW 2007
T. 02 9211 3744
W. www.sturnoble.com.au
landscape architecture
environmental & urban design

PROJECT

2 - 6 GIRAWAH PLACE, MATRAVILLE

CLIENT

Spirecorp

DRAWING

STREETSCAPE INDICATIVE PLANTING

DRAWING No.

ISSUE

DRAWN

DATE

DA-2207-08

A

jc

20.06.2022

ACN: 164 245 514 ABN: 99 164 245 514
THIS DRAWING SHOULD BE READ IN CONJUNCTION WITH ALL RELEVANT
CONTRACTS, SPECIFICATIONS, REPORTS AND DRAWINGS. COPYRIGHT
OF THIS DRAWINGS IS VESTED IN STURT NOBLE ASSOCIATES PTY LTD.